

Kolbusz  
space

Australian Art & Design with

CULT

n  
a  
u

**AUSTRALIAN DESIGN & ART**  
**26 – 29 April**

**KolbuszSpace together with CULT have collaborated to show significant stockroom artworks alongside a collection showcase of furniture by Adam Goodrum for Australian design brand nau, including the new Mega Tulip and Rib designs.**

**Viewings by appointment.**

**Artwork enquiries [hello@kolbuszspace.com](mailto:hello@kolbuszspace.com)**

**Furniture enquiries to Christopher Pooré [chris@cultdesign.com.au](mailto:chris@cultdesign.com.au)**

## **Matthew M c A L P I N E**

**Matthew McAlpine is an interdisciplinary artist who lives and works in Whadjuk Nyoongar Boodja (Perth, Western Australia).**

**His practice aims to explore the complexities and problems of celebrating colonial history and legacies which whitewash history, deny Indigenous culture and rapidly degrade the environment. McAlpine graduated from Curtin University in 2016 and was awarded a residency at ECU in 2021.**

**McAlpine will be exhibiting new works at KolbuszSpace in Nov 2022.**



Matthew McAlpine

*Beneath the Radiant Southern Cross (Stirling)*

Acrylic paint, sand, fluorescent pigment, binder and cast acrylic paint on canvas

122cm x 366cm

A\$ 7,500

## **Joana P A R T Y K A**

**Joana Partyka is a ceramicist, illustrator and political staffer based in Boorloo (Perth). In her unique ceramic works, Partyka attempts to both make sense of and comment on the bewildering state of contemporary life and politics – the bush fires, the pandemic, the social upheaval, the activism, the bumbling and bad politicians.**

**Fuelled by rage and grief, her work pushes the viewer to reflect on their own experiences, as well as offer hope and beauty from its ashes.**

**Partyka's first solo show which was at KolbuszSpace in Apr 2021 sold out.**





Joana Partyka  
*Koi No Yokan*  
Stoneware, glaze, lustre  
36 x 16cm  
A\$ 1,600

## **Christophe C A N A T O**

**Christophe Canato is a French–Australian photo–media artist who was accepted to study at the École des Beaux–Arts in Paris at 17. Since relocating to Perth in 2005, his photo media disciplinary approach now also includes videography. Canato’s impeccably crafted and moving works explore social issues including politics and religion, physical identities and sexual orientations. His most recent work examines male roles and identities in our contemporary western contexts.**

**Canato is having an online exhibition with KolbuszSpace in May 2022.**



Christophe Canato  
*Anima #2*, edition 2 / 5  
Archival inkjet print  
110 x 110cm  
A\$ 2,600 framed

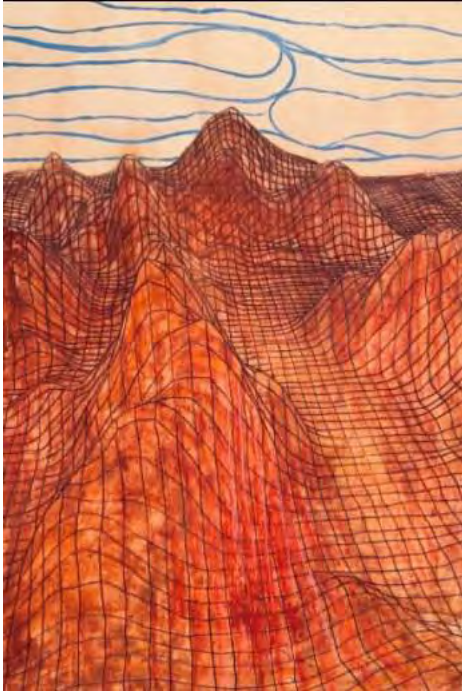
## Matthew M c V E I G H

Matthew McVeigh is an interdisciplinary artist who graduated from WAAPA. His practice is predominantly interested in how identities, histories and institutions can be consumed and subsumed into homogenized narratives. McVeigh employs a wide range of materials, processes, technologies and semiotics to create work that is bold and layered with nuance and meaning.

McVeigh's works from frequent visits to the Pilbara region employ technical drawing and graphing techniques used for geological surveying. The ochre used in these works was gifted to McVeigh by traditional landowners.

McVeigh's works have been acquired by collections such as the *Holmes à Court* Collection and the *Art Gallery of WA* Collection.





Matthew McVeigh  
*Valleys*  
 Ochre, acrylic and ink on hardboard  
 92 x 62cm  
 A\$ 1,900 framed



Matthew McVeigh  
*Plateau*  
 Ochre, acrylic and ink on hardboard  
 62 x 92cm  
 A\$ 1,900 framed

## Waldemar K O L B U S Z

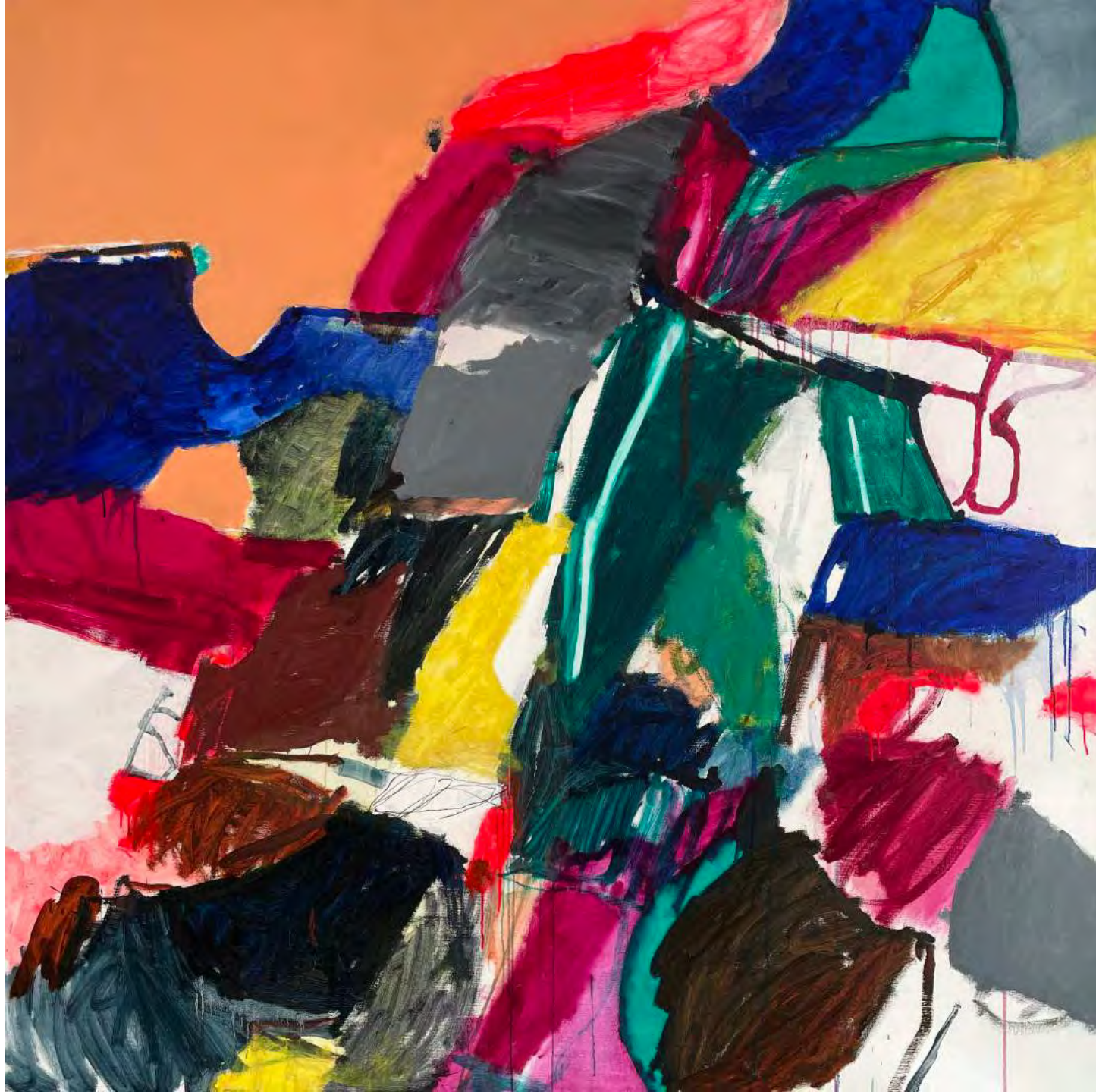
Waldemar Kolbusz lives and works in Perth, and has been painting full-time and exhibiting regularly for the past two decades.

KolbuszSpace is a multi – purpose studio, gallery and project space under his direction, located in the former industrial Claisebrook precinct on the inner-city fringe area of Perth.

Kolbusz Space prioritises ways to encourage sustainable careers and facilitate positive outcomes for artists, with mentoring and regular exhibition opportunities for selected emerging artists.

Kolbusz's upcoming solo exhibition *Love is Back* opens 29 April 2022 at Gallerysmith in Melbourne.





Waldemar Kolbusz  
*Babyface*  
Oil on linen  
183 x 183cm  
A\$ 23,000





## **Imogen K O T S O G L O**

**Imogen Kotsoglo is an artist from Perth, Western Australia. Her multifaceted practice is primarily focussed on drawing, while encompassing photography and installation.**

**Kotsoglo's work seeks to explore the capacity of visual art to represent and examine the wider implications of a perceived distinction between humans and the natural world. Kotsoglo's rejection of anthropocentrism does not render her work political in the usual sense, instead providing space for reflection rather than rhetoric.**

**Since graduating from Fine Arts at the Royal Melbourne Institute of Technology, Kotsoglo has been accepted for various prestigious residencies and has exhibited both nationally and internationally as part of group and solo exhibitions.**

**Kotsoglo will be exhibiting at both PICA and KolbuszSpace in Aug 2022.**



Imogen Kotsoglo  
*Phyto 16*  
Ink on Arches Aquarelle 300gsm  
96.5 x 77.5cm  
A\$ 1,400 framed



## Olivia C O L J A

Olivia Colja is a Western Australian artist, curator and community advocate. Her large scale paintings explore a variety of themes including vibrant and lively landscapes and also deeper, private explorations of grief and ultimately peace and grace.

Colja has a Bachelor of Social Science, a Diploma of Business and a Bachelor of Contemporary Arts. For the past three years Colja has directed, curated and exhibited in *WOMXN* which supports and celebrates women and non-binary artists to showcase artwork about their gender experiences.

Colja will have her anticipated first solo exhibition at KolbuszSpace in July 2022.

Olivia Colja  
*Restless Nights*  
Oil on canvas  
205 x 153cm  
A\$ 4,200



## Austin H O N O U R

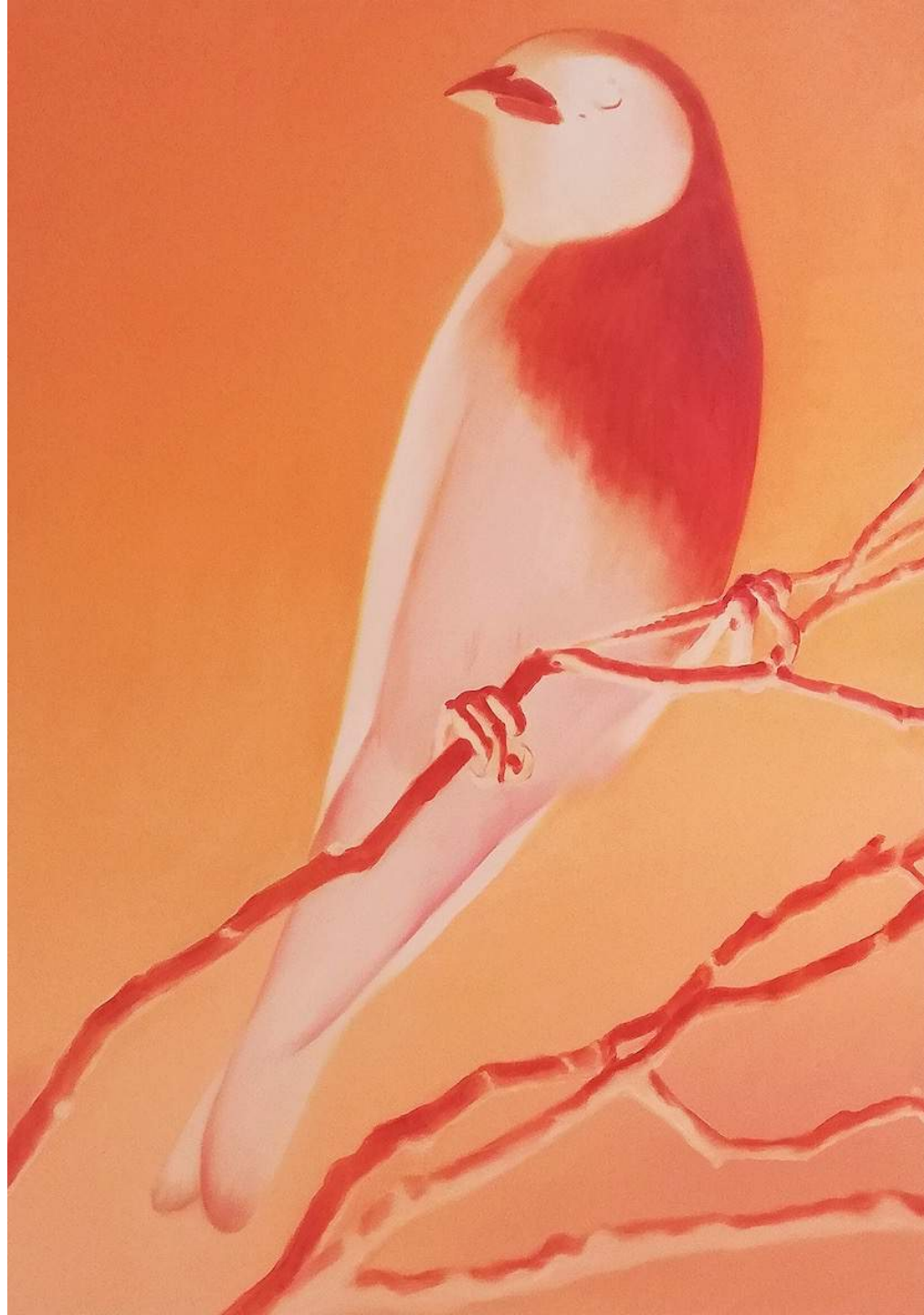
Austin Honour is a British/Australian multidisciplinary artist who's work collages conventions of painting, sculpture and tattooing. Previously located in Berlin, Honour is now based in Perth, Australia.

Interested in ideologies of history, material and value, Honour works within a holistic studio practice which aims to connect media, concept and form. Honour's recent paintings stem from an engagement with found imagery often depicting objects of history and nature. Honour was awarded a BA Hons Fine Arts from Central St Martins in London in 2014.

Honour's solo exhibition *Outer* is upcoming at KolbuszSpace in May 2022.



Austin Honour  
*Red Bird*  
Oil on canvas  
170 x 120cm  
A\$ 4,500





## Sam B L O O R

Sam Bloor is a photographer and visual artist who lives and works in Perth. His practice investigates points of contention within the designation of urban space along with perceived notions of value and labour.

Bloor has exhibited in a number of group and solo shows both nationally and internationally including, *Birth and Death of a Mountain* (2020) at KolbuszSpace, and most recently was commissioned by FAC for an important public work as part of the Perth Festival exhibition UNDERTOW, which interrogated Australian nationalism and border politics.

Bloor is planning a new exhibition at KolbuszSpace in 2023.



Sam Bloor  
*Desire*, edition 1 / 1  
Digital UV print on mirror  
32 x 32cm  
A\$ 700 framed



## Mega Tulip Modular Sofa

by  
Adam Goodrum

Designed for the workplace of tomorrow, Mega Tulip features the same organic curves and perfect proportions as its predecessor, Fat Tulip. Suitable for a plethora of commercial environments ranging from flexible workplaces to lobbies to public areas, Mega Tulip has a distinctive softness that also lends itself to residential settings. Allowing for limitless configurations, Mega Tulip is as adaptable as it is graphically interesting. This flexible modular system is comprised of a diverse landscape of elements, from independent sofas and armchairs, to straight or curved segments and high back booths. Create private zones for focus, open spaces for interaction or casual areas for relaxation.

### Finishes

Available in a range of fabric and leather options







## Mega Tulip Modular Sofa

by  
Adam Goodrum



RRP from \$2,630

Dimensions: 800W x 750D x 700H cm (440 seat height)



RRP from \$3,820

Dimensions: 800W x 750D x 1300H mm (440 seat height)



RRP from \$4,670

Dimensions: 2040W x 900D x 700H mm (440 seat height)



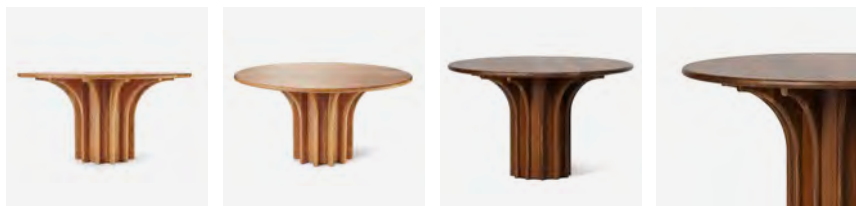
RRP from \$6,205

Dimensions: 2040W x 900D x 1300H mm (440 seat height)



RRP from \$1,680

Dimensions: 920W x 650D x 440H mm



## Rib

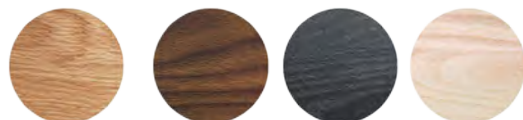
by  
Adam Goodrum

Inspired by Sydney's iconic MLC centre by architect harry seidler, rib is the first pedestal table in the nau collection. With a striking architectural aesthetic, rib's circular form offer a softness within commercial and residential spaces. Visually light but deceptively robust, the fluted ribs allow maximum stability in their elevation of the tabletop. Designed for meeting, conversation and togetherness, Rib is an inviting and functional table that allows for optional integrated power and data supply.

### Dimensions

1200dia / 1500dia / 1800dia x 720H mm  
custom sizing available

### Finishes



oak

walnut

black  
stain

ash

### Pricing

1200dia  
RRP from \$6,815

1500dia  
RRP from \$9,085

1800dia  
RRP from \$10,885







## Skip

by  
Adam Goodrum

Characterised by its distinctly smooth, round surface, Adam Goodrum brings a sense of nostalgia to his new coffee table, Skip, which is inspired childhood memories of skipping stones. Solid marble gently flows into FSC certified timber in a seamless balance of materiality and form. Available in three different sizes and a selection of finishes, Skip tables can be placed individually or layered, adding an organic yet elegant feature to any interior space.

### Dimensions

450dia x 450H mm  
700dia x 370H mm  
1000dia x 300H mm

### Finishes



oak



walnut



white



green



grey

### Pricing

450dia  
RRP from \$1,420

700dia  
RRP from \$2,270

1000dia  
RRP from \$3,680



# Don

by  
Adam Goodrum

Don is an exploration of craftsmanship, comfort and considered details. Elegantly draped timber dons a sturdy wooden frame to create a chair that is strong and durable yet lightweight. Don’s angled back doubles as a functional armrest to encourage movement, whilst the gently curved seat offers ergonomic support, eliminating pressure points in the legs of the sitter. With playful details such as the visible connection between the frame and seat reminiscent of cufflinks, Don has a uniquely compact footprint suitable for a variety of commercial contexts.

## Dimensions

410W x 510D x 755H mm (450mm seat height)

## Finishes



oak          walnut          black stain          walnut/beech

## Pricing

RRP from \$630





## Broad

by  
Kate Stokes

Named after its distinctive scale and slimline silhouette, broad is a classic yet contemporary pendant that creates intimacy in even the largest of spaces. Offering a soft diffusion of light with an ambient, even glow, broad was designed to be placed above the centre of a table – from dining to meeting. Striking enough to command attention yet streamlined enough to fit in within any space, broad does more than just illuminate; it centres conversations, focus and atmosphere.

### Dimensions

800dia x 295H mm / 500dia x 240H mm (3m cord)

### Finishes



black

white

eucalypt (500Ø only)

### Pricing

500dia  
RRP \$650

800dia  
RRP \$1,230





# Nami

by  
Tom Fereday

Nami, meaning ‘wave’ in Japanese, is a comprehensive furniture collection named after its signature timber profile that seamlessly flows into adjoining components. handcrafted in nsw from sustainably certified solid timber, Nami’s sculpted form is a celebration of natural materials. Directional grain details achieved through precision craftsmanship appear throughout the collection, giving each piece an organic artfulness. Comprising a range of tables, a sofa, armchair, ottoman and bed, Nami is a humble yet elevated collection that has been designed to last a lifetime.

## Finishes



oak



walnut



black  
stain





# Nami

by  
Tom Fereday



## Nami sofa RRP from \$6,825

2 seater 1840W x 820D x 745H (380mm seat height)

2.5 seater 2240W x 820D x 745H (380mm seat height)



## Nami armchair RRP from \$5,740

900W x 820D x 745H mm (380mm seat height)

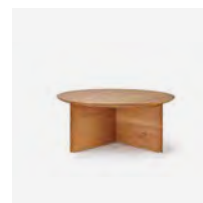


## Nami ottoman RRP from \$3,705

Single ottoman 1000W x 800D x 380H mm

2 seat ottoman 1805W x 800D x 380H mm

2.5 seat ottoman 2200W x 800D x 380H mm



## Nami coffee table RRP from \$2,560

Small 650dia x 450H

Large 900dia x 350H





# Softply

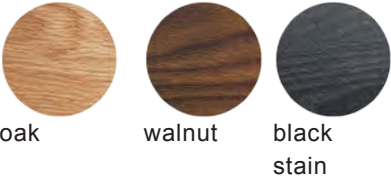
by  
Adam Goodrum

Playfully paradoxical, Softply is a seating collection that pushes the boundaries of materiality. Typically a rigid material, plywood is press-moulded into a unique 3-directional curve to create a distinctive backrest that cascades elegantly over a stainless-steel frame and doubles as a sweeping armrest. This curved back is informed by geometry to create an ergonomically supportive chair that promotes a relaxed comfort. Softply’s 360-degree design considers every viewpoint, particularly the back from which chairs and stools are most commonly viewed. The Softply collection comprises a stackable chair and both bar and counter height stools in a selection of finishes.

## Dimensions

Chair: 550W x 520D x 725H mm (450mm seat height)  
 Kitchen Stool: 510W x 450D x 905H (650mm seat height)  
 Bar Stool: 510W x 510D x 995H (750mm seat height)

## Finishes



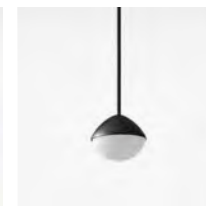
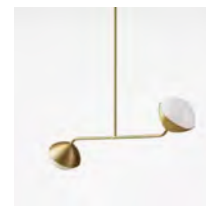
oak          walnut          black  
 stain

## Pricing

Chair  
 RRP \$600

Stool  
 RRP from \$658





## Jolly

by  
Kate Stokes

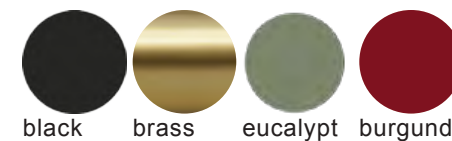
Arising from the desire to create a playful lighting collection, Jolly is an exploration of form and material. Translucent, hand-blown glass is juxtaposed against solid-coloured metal rods and shades to create a balance of material composition, while the asymmetric elfin-like form injects a cheerful sense of joy.

### Dimensions

Double Rob Pendant  
980W x 183D x 3000H mm  
Shade: 183W x 183D x 165H mm  
Max rod length: 3m

Single Rod Pendant  
183W x 183D x 3000H mm  
Shade: 183W x 183D x 165H mm  
Max rod length: 3m

### Finishes



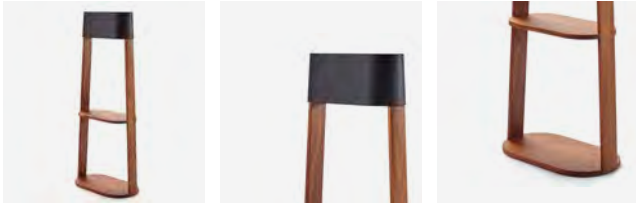
black   brass   eucalypt   burgundy

### Pricing

Double Rod Pendant  
RRP from \$1,305

800dia  
RRP from \$745





# Stack

by  
Zachary Hanna

Winner of the 2018 Mercedes-Benz Design Awards, Stack combines the functionality of several living room objects into one simple yet refined produc. a lamp, a bookshelf and a side table. Crafted from solid natural timber with seamlessly integrated wiring, Stack is a thoughtful, timeless and unique object that simplifies home-living. Its sculptural plywood shade creates soft, diffused light, gently illuminating its strong and defined structure. Stack is available in oak, ash and walnut finishes with a black stained timber shade.

59W x 33D x 140H cm  
60cm table height / 20cm shade height

## Dimensions

## Finishes



oak      walnut      ash

## Pricing

RRP from \$2,900





# Molloy chair

by  
Adam Goodrum

Elegantly sculptural, the Molloy collection of dining tables, chairs, shelving and coffee tables feature fluid detailing inspired by a rare act of nature.

The idea for the artfully rounded joinery, where two elements meet and seamlessly become one, comes from the unusual meeting of two rivers to form the Molloy River in Western Australia – a place where Adam Goodrum hand-built a holiday home with his family. The Molloy collection is available in a variety of timber finishes.

## Dimensions

520W x 500D x 780H mm (450mm seat height)

## Finishes



oak



walnut



black  
stain



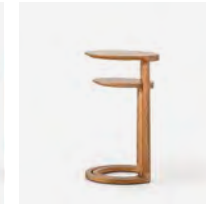
ash

## Pricing

RRP from \$2,735







## Nest tables

by  
Adam Goodrum

Nest is a set of two tables that can function nested together or separated individually. Stacked, they create totemic shapes that add interest to any room. Deployed, they cantilever over sofas, beds and chairs, or simply float around a room; a space-saving and flexible alternative to a coffee table. Mix and match your set of Nest tables from a range of powdercoated aluminium colours and timbers to create a custom configuration that suits you and your home or office.

### Dimensions

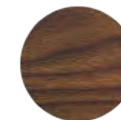
Small: 315dia x 480H mm

Large: 385dia x 620H mm

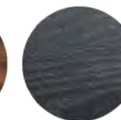
### Finishes



oak



walnut



black  
stain



ash

### Pricing

RRP from \$2,300



CULT

KolbuszSpace

Cult Design  
@cultdesignau  
cultdesign.com.au

2 Gladstone Street Perth 6000  
@kolbuszspace  
kolbuszspace.com

KolbuszSpace respects and acknowledges the Whadjuk Noongar people past, present and future as the traditional carers of the land where the space is situated, and supports their hopes for the future, the positive role arts can contribute to this, and the wellbeing of all of us together.